

BACHELOR OF BUSINESS ADMINISTRATION

BE THE BUSINESS



SFU

BEEDIE
SCHOOL OF BUSINESS

FALL 2025 HIGH SCHOOL VIEWBOOK

EXPLORE CAMPUS

Simon Fraser University respectfully acknowledges the x̱m̱əθḵw̱əy̱əm (Musqueam), Sḵwx̱w̱ú7mesh Úxwumixw (Squamish), səlilw̱ətaʔl (Tsleil-Waututh), q̱ícəy̱ (Katzie), ḵw̱iḵw̱əłəm (Kwikwetlem), Qayqayt, Kwantlen, Semiahmoo and Tsawwassen peoples on whose unceded traditional territories our three campuses reside.

Embark on an adventure of discovery at SFU Beedie.

Explore innovative ideas and challenge the norm. Gain practical skills through hands-on projects with award-winning faculty and industry partners, all in a learning experience tailored to your unique career goals. Build meaningful connections, discover career opportunities, and expand your global network.

Whichever path you choose, you'll graduate with the skills, experience and connections that showcase your agility, creativity, and career readiness.

**Are you ready to experience more?
Book a campus tour.**



SFU BURNABY CAMPUS

WHO DO YOU WANT TO BE?

LEADER. CHANGEMAKER. BIG PICTURE THINKER.

At SFU Beedie, we know that business isn't just about profit—it's about making a positive impact. We believe business has the power to spark new ideas, fuel social innovations, and advance society. Through teaching and learning driven by world-class research, a global outlook and meaningful community engagement that goes beyond the walls of academia, we empower students from diverse backgrounds and perspectives to reimagine the role that business plays in tackling society's most significant challenges.

WHY SFU BEEDIE?



#1 **COMPREHENSIVE UNIVERSITY IN CANADA**
15 out of the last 16 years (as of 2024), according to Maclean's

#1 **UNIVERSITY IN CANADA FOR INNOVATION**
according to the World University Rankings for Innovation, 2024

#1 **UNIVERSITY IN CANADA FOR SUSTAINABLE CITIES AND COMMUNITIES**
according to Times Higher Education 2024 rankings

1% **OF BUSINESS SCHOOLS** worldwide have AACSB, EQUIS and PRIME accreditation



3,862 **UNDERGRADUATE STUDENTS WITH 25% INTERNATIONAL** (2023/24)

#1 **BUSINESS SCHOOL** at JDC West 2019, 2021 & 2023

2 **CAMPUSES** offering courses in all 3 terms

ELITE CASE COMPETITION

CUSTOMIZE YOUR EXPERIENCE

1

CHOOSE YOUR PASSION

Select one or more areas of concentration.

2

CHOOSE YOUR EXPERIENCE

Choose from 15+ experiential learning courses that include industry-engaged applied projects, simulations, or live cases.

3

CHOOSE YOUR PATH

Take a term away to study abroad or work, or push hard to graduate sooner with our three-term system.

Certificate in Business Analytics and Decision Making (BADM) teaches you how to ask the right questions, manage data, and be familiar with statistical and computational methods to make key business decisions.

BUS439 - Analytics Project allows you to gain hands-on experience and boost your skills by working on real client projects with top industry partners, including exciting collaborations with organizations like Electronic Arts and Royal Columbian Hospital.

CHOOSE YOUR PASSION

Our Bachelor of Business Administration (BBA) program allows you to customize your degree to your unique interests and strengths by choosing one or more of nine diverse, in-demand areas of concentration.

Finance	Management Information Systems	Accounting
Innovation & Entrepreneurship	Human Resource Management	Operations Management
International Business	Marketing	Strategic Analysis

From there, create an educational experience tailored to you with courses and activities aligned with your goals. Add a certificate or minor, pursue an honours or joint degree, explore courses in other disciplines — you're limited only by your imagination.



Learn about each concentration from faculty and students.

CHOOSE YOUR EXPERIENCE

Gain an edge with experiential learning that combines applied problem-solving with a foundation in contemporary business principles and practices.

CHOOSE YOUR PATH

Customize your studies in a responsive program tailored for you. Take a term off and gain real work experience through co-op or study abroad with an international exchange. Take advantage of our trimester system with a range of daytime and evening classes across two campuses. Enjoy the freedom to choose what, where, and when you want to study.

YOUR DEGREE YOUR WAY



100+

PROGRAM OPTIONS TO COMPLEMENT YOUR DEGREE

56

AVERAGE CLASS SIZE (2023/24)

SFU SURREY CAMPUS

BUILD CONNECTIONS LEARN SKILLS

JDC WEST:
#1 SCHOOL OF THE YEAR
(2019, 2021, 2023)



LAUNCH ORIENTATION



LAUNCH

LAUNCH is your introduction to an incredible community that supports your success during and after your degree. During LAUNCH, you'll experience a mix of academic, personal and professional development sessions, as well as social and team activities that will prepare you to thrive academically and socially.

LIVING-LEARNING COMMUNITY (LLC)

Live in SFU Residence in our LLC with other like-minded business students. Here you can build community, explore your passions, and learn from one another while applying skills outside of the classroom through unique programming opportunities.

PUT YOUR PROBLEM SOLVING SKILLS TO THE TEST



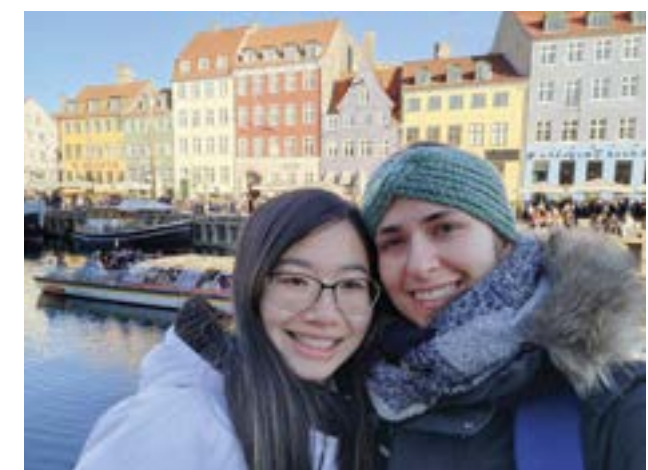
CASE COMPETITIONS

Case competitions bring students together in teams to tackle business problems through innovative solutions pitched to industry judges, promoting critical thinking, analysis, and presentation skills. Students travel nationally and worldwide to compete, building their network in destinations such as **Maastricht, Netherlands** and **Budapest, Hungary**, making this an incredible opportunity.

STUDENT ORGANIZATIONS

Elevate your personal growth and network by joining student organizations. Develop exceptional team building and leadership skills while connecting with others who share your interests from social innovation and equity in business to consulting and finance. Tap into a network of experienced peers who can provide valuable advice, mentorship, and lasting friendships.

GAIN A GLOBAL PERSPECTIVE THAT OPENS DOORS



STUDY ABROAD

Seize the opportunity to broaden your horizons, explore diverse cultures, and gain invaluable insights into the dynamic realm of business and the global marketplace.

Popular study abroad destinations: Germany, USA, China and Vietnam.

65+ BUSINESS EXCHANGE PARTNERS
in over 35 countries (2023/24)

16+ BUSINESS-FOCUSED STUDENT ORGANIZATIONS supported by SFU Beedie

111 COUNTRIES REPRESENTED in the SFU Beedie undergraduate student body (2021/22)

30,000+ SFU BEEDIE ALUMNI across the globe

READY FOR THE REAL WORLD



From day one, you will receive career support to prepare you for the job market with a robust skill set that showcases your knowledge and abilities, positioning you as a catalyst for change.

Students engage in professional development courses at the start, middle, and end of their degree, shaping them into well-rounded leaders and professionals.

NETWORKING RECEPTION

EARN WHILE YOU LEARN

Enhance your resume with paid industry experience while you complete your degree. SFU Beedie offers one of the largest Co-operative Education programs in Western Canada. You'll have access to local and international job postings to explore different career options in a variety of industries.

Example co-op employers (2023/24):

KMPG	Tesla
PwC	BMO
Fraser Health Authority	SFU

Top international co-op destinations (2023/24):

Germany	China
USA	Vietnam



Career Management Centre (CMC)

The CMC is dedicated to your career development, offering workshops, career prep programs, coaching, mentoring, networking, exclusive recruitment events, job postings and more.

Marketing Accelerator Program (MAP)

A marketing development program for top-tier marketing students, MAP helps you bridge your academic training into industry through case-based assignments, portfolio development, networking opportunities, and mentorship.

Beedie Urban Development Program (BUDP)

BUDP offers you the chance to explore urban development and commercial real estate through an engaging curriculum led by industry professionals, preparing you for high-demand careers in shaping the future of Canada's cities.

Management Consulting Career Preparation (MCCP)

MCCP prepares you for a career in management consulting, focusing on strategic functions. Through an engaging 10-week program with workshops and site visits, you'll gain essential skills and networking opportunities with top consulting firms.

\$14,000

AVERAGE SALARY
for a four-month co-op term

\$78,928

AVERAGE BBA GRAD SALARY
TWO YEARS AFTER GRADUATION
(2023 BC Student Outcomes Survey)

1200+ CAREER MENTORS

connecting with business students through SFU Beedie Advantage

732 CO-OP WORK TERMS

completed by SFU Beedie students (2023/24)



**CHARLES CHANG
OPPORTUNITY FAIR 2023**

FORGE YOUR OWN CAREER PATH

CHARLES CHANG

SFU is recognized as Canada's #1 university for innovation, (WURI, 2024) and The Charles Chang Institute for Entrepreneurship within the Beedie School of Business, is one reason why. The institute is the interdisciplinary home and academic hub for entrepreneurship and innovation at SFU. Here you can activate your degree by adding the skills and knowledge to build a career, and shape the future you want.

ECOOP

The Entrepreneurship Coop (eCoop) program means you don't have to give up on your entrepreneurial dreams while you get a degree. This first-of-its-kind program in Canada allows students to earn co-op credits and an income while working full-time on their startup. The Charles Chang Incubator awards up to three spaces in the program each semester to undergraduate students (or teammates) and supports them with dedicated mentoring, access to co-working space, and workshops in addition to a paid salary.

250+ STARTUP
FOUNDERS

mentored annually through the Charles Chang Institute for Entrepreneurship

\$1.2M REVENUE
GENERATED

by Chang Institute startup teams during 2023-24

MEET THE NEXT GENERATION OF BUSINESS LEADERS



Ekam Khangara,
BBA HONOURS (2024)

My time at Beedie has been an amazing journey, filled with learning, growth, and unforgettable connections.

I joined student organizations early, including Enactus SFU and the Business Administration Student Society (BASS), which shaped my passions and career path. My longest commitment was with SFU JDC West, where I competed for three years and served on the executive team. I also held two pro-bono positions with Axis Consulting, where I proudly led our first ever paid consulting project.

Studying abroad at the Prague School of Business and Economics was eye opening. Traveling to over 20 countries expanded my horizons and deepened my understanding of international business. I also was selected for the Futures Fund Award by Canada's Outstanding CEO of the Year. This incredible experience included workshops, networking opportunities, and a surprise job offer from KPMG!

CONCENTRATIONS

Management Information Systems, Marketing, Strategic Analysis, Operations Management, Certificate in Business Analytics and Decision Making



Lucas Chan,
BBA HONOURS (2023)
2 + 2 DOUBLE DEGREE
WITH HKBU SCHOOL
OF BUSINESS

The highlight of my SFU Beedie experience was undoubtedly my exchange program at Singapore Management University in Spring 2024. It was an incredible opportunity to immerse myself in a vibrant Asian hub and deepen my knowledge of international business and entrepreneurship.

I found a supportive community through volunteering with the University Christian Ministries, which connected me with like-minded friends. I also participated in the Management Consulting Career Preparation (MCCP) program. Through MCCP, I gained skills in case interviews, behavioural interview prep, and understanding the recruitment process for consulting firms. These skills directly helped me land my current position as a technology analyst at Deloitte.

CONCENTRATIONS

Innovation & Entrepreneurship, International Business



Kip Guthrie,
BBA MAJOR

My time at SFU Beedie has been filled with transformative experiences that have shaped my academic and professional journey.

As an active member of the Business Administration Student Society (BASS), I co-led the award-winning "BASS Thrift Shop," raising over \$4800 for charity. Competing in JDC West, a prestigious case competition for business schools in Western Canada, was a cornerstone of my degree. This sparked my involvement in more case competitions, like the Milgard Invitational Case Competition on Social Responsibility at the University of Washington, where our team secured 1st place among 19 business schools from 7 countries.

Being part of the SFU Men's Lacrosse team is also incredible, leading to multiple conference championships against our rivals. These experiences have provided me with invaluable skills, unforgettable memories, and friendships that will last a lifetime.

CONCENTRATIONS

Operations Management, Strategic Analysis, Corporate Environmental and Social Sustainability Certificate



Learn more
about Kip's
experience

BBA DEGREE ROADMAP

96%
of 1st year SFU Beedie students successfully transition into 2nd year



- Join a student organization*
- SFU Beedie Protégé Leadership Program*



- Apply to co-op and international exchange*
- Volunteer with SFU and the community*

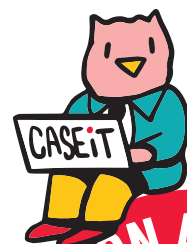
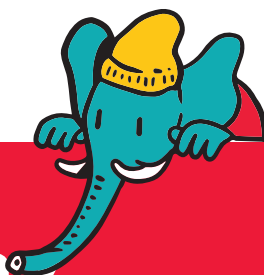
YEAR 1 FOUNDATIONAL COURSES

YEAR 2 EXPLORE YOUR INTERESTS

- **BUS 203 Professional Development - LAUNCH**
- BASS Mentorship Program*

- **BUS 201 Case Challenge**
- PEAK Case Competition*

- Student organization member or coordinator*
- **BUS 300 Professional Development - Planning**



- Complete SPARK program*

- Leadership position in student club*



- **Declare concentration**



- **ELITE Case Competition***

96%

of BBA graduates are employed within 3 months (according to a survey of Fall 2023 and Spring 2024 grads)

FOCUS ON ACADEMIC PURSUITS

YEAR 3

- International exchange term*

- Eight month co-op or eCoop work term*
- Attend a student organization networking event*

- Explore industry-specific career opportunities*

- Career advising and full-time job search*



YEAR 4

COMPLETE YOUR STUDIES

- Four-month co-op work term*

- National or international case competitions*

- **BUS 496 Professional Development- Summit**

- **CONVOCATION!**

- Secure post-graduate employment

* Optional activities you can pair with your academics to ensure you're prepared for your future career



ADMISSION REQUIREMENTS 2025 BC HIGH SCHOOL

WEST MALL CENTRE

HIGH SCHOOL DEADLINES (FALL 2025)

<p>December 15, 2024</p> <p>Entrance Scholarship Application Closes</p>	<p>January 31, 2025</p> <p>Entrance Scholarship Documents SFU Application Closes</p>	<p>February 7, 2025</p> <p>SFU Beedie Supplemental Application, Self-Reported Grades and Documents</p>
--	---	---

GRADE 12 REQUIREMENTS

Students must complete a minimum of five approved Grade 12 courses, including:

LIST A

- **English Studies 12 (min. 70%) or equivalent**
- **Pre-Calculus 12**
- **ONE of:**
 - 20th Century World History 12 (History 12)
 - Anatomy & Physiology 12 (Biology 12)
 - Chemistry 12
 - Composition 12
 - Creative Writing 12
 - Economic Theory 12
 - Economics 12
 - Genocide Studies 12
 - Law Studies 12 (Law 12)
 - Literary Studies 12 (English Literature 12)
 - New Media 12
 - Philosophy 12
 - Physics 12
 - Spoken Language 12
 - Statistics 12

+TWO additional approved Grade 12 courses from List A or List B

Note: Equivalent AP or IB courses may be used in place of the above courses.

LIST B

- Accounting 12
- American Sign Language 12
- Asian Studies 12
- BC First Peoples 12
- Calculus 12
- Comparative World Religions 12
- Comparative Cultures 12 (Comparative Civilizations 12)
- Computer Science 12
- Contemporary Indigenous Studies 12
- Engineering 12
- Entrepreneurship 12
- Environmental Science 12 (Sustainable Resources 12)
- Farsi 12
- Financial Accounting 12
- Foundations of Math 12
- French 12
- Geology 12
- Geometry 12
- German 12
- Human Geography 12
- Italian 12
- Japanese 12
- Korean 12
- Mandarin 12
- Mechatronics 12
- Physical Geography 12 (Geography 12)
- Political Studies 12
- Punjabi 12
- Russian 12
- Social Justice 12
- Spanish 12
- Urban Studies 12

High school graduates, or students with fewer than 24 units of transferable coursework from another post-secondary institution, are competitively selected for admission in the Fall and Spring terms only.

#1

Students must meet SFU's **English Language** and **Quantitative and Analytical Skills requirements**, plus complete all required Grade 11 and 12 course requirements.

#2

The Admission Evaluation is based on all approved Grade 11 and 12 courses, with greater emphasis on those in List A.

#3

Students must also complete a Supplemental Application, or complete an eligible Entrance Scholarship Application.

GRADE 11 REQUIREMENTS (ALL LIST B)

Students must complete a minimum of five approved Grade 11 courses, including:

- **English 11 or equivalent**
- **Language 11 or equivalent**
- **Math 11, at least one of:**
 - Foundations of Math 11
 - Pre-Calculus 11
- **Science 11, at least one of:**
 - Chemistry 11
 - Earth Sciences 11
 - Environmental Science 11
 - Life Sciences 11 (Biology 11)
 - Physics 11
 - Science for Citizens 11
 - Specialized Science 12
- **Social Studies 11, at least one of:**
 - Explorations in Social Studies 11
 - Francophone History 11
 - Approved Social Studies 12 course
- **and any additional non-required, approved courses**
 - Any Arts Education 11 courses
 - Engineering 11

*All information is correct at the time of publication. Visit beedie.sfu.ca/bba/apply for complete details on course requirements, deadlines, the Supplemental Application and the application process.

Admission Requirements



English Language Requirement





**SUPPLEMENTAL APPLICATION
OR AS WE LIKE TO CALL IT
YOUR STORY**

YOUR SFU BEEDIE STORY BEGINS HERE.

You worked hard for your grades, but we know you are more than just numbers and letters. The Supplemental Application brings to life your experiences and personality. It is your chance to share with us a complete picture of who you are and why an SFU Beedie education is right for you.

Grades matter, but so do your experiences, achievements, and character.

Members of SFU Beedie's Supplemental Evaluation Committee carefully assess each application and create a score. This score is combined with your admission evaluation to determine eligibility to SFU Beedie. Before scoring, we remove information which might identify you to ensure you are rated solely on the strength of your answers.



Learn more about the Supplemental Application

PROFILE OF AN IDEAL CANDIDATE

- Academically strong
- Unique
- Shows drive and initiative
- Interested in experiential learning
- Open to different perspectives

WHAT TO EXPECT

- A short answer response that reveals more about who you are and demonstrates your communication skills.
- A place to describe your extra-curricular activities, from athletics and artistic pursuits to volunteer work and community involvement, tell us about your interests and what makes you unique.
- A place for you to share something which does not fit into the above categories.
- A request for two references, one being a teacher or counsellor.
- Payment of the Supplemental Application fee.

TIPS

THINK about your application now. Reach out to references early—don't wait until the last minute. Plan ahead for logistics like application deadlines and methods of payment.

READ through the whole application before you begin. Take your time—and follow all instructions carefully. Be sure to review your completed application for errors before you submit it.

REFLECT on your experiences – both challenges and achievements—and how they have prepared you for SFU Beedie.

BE AUTHENTIC because we want to learn about the real you. You can talk to others about your application, but we want you to tell your story in your own words.

BE ACCURATE because we evaluate all content and take falsification of information and plagiarism seriously. Make sure your references can validate your experiences.

FUNDING YOUR DEGREE

SCHOLARSHIPS, AWARDS, AND BURSARIES

A) ENTRANCE SCHOLARSHIPS

(present grades in the 90s or 311B points)†

- SFU Undergraduate Scholars Entrance Scholarships (values range from \$40,000 up to an amount sufficient to cover tuition and mandatory supplementary fees. Further funding, in the form of a living allowance, may be offered to support exceptionally talented students with demonstrated financial need.)
- Lloyd-Carr Harris Foundation Entrance Scholarship in Business Administration (\$20,000)

B) SCHOLARSHIPS, AWARDS, AND BURSARIES FROM YEAR TWO ONWARDS

- SFU offers scholarships, awards, and bursaries for continuing SFU students.
- Domestic and international students can apply for these opportunities each term.

For further information on scholarships, awards, and bursaries visit: sfu.ca/students/financialaid/entrance

†Predicted bonus points are not considered in the calculation

MARKETING COURSE AT SFU SURREY CAMPUS



WORK-STUDY

A Work-Study position is an opportunity to participate in research-based projects and earn a supplemental income. Students gain valuable experience connecting with various members of the SFU community while building their co-curricular record. You must complete a minimum of 100 hours in your Work-Study position.

For more information:

sfu.ca/students/financialaid/undergrad/work-study

PART-TIME WORK

With our flexible BBA program, a large number of SFU Beedie students work part-time while studying full-time. 50% of surveyed students indicated that they are working while going to school (66% of these students are working 10–29 hours per week).

SFU Beedie's Career Management Centre supports students in their job search for part-time opportunities.

For more information: beedie.sfu.ca/bbacareers

CO-OP (DOMESTIC OR INTERNATIONAL)

In 2023/24 SFU Beedie secured 732 co-op work term placements, with 9 based outside of Canada.

Examples of SFU Beedie co-op employers: Deloitte, EY, PwC, KPMG, SAP, Microsoft, Google, Tesla, Facebook

Average salary for a four month term: \$14,000

Co-op fees apply. For more information:

sfu.ca/coop/programs/beedie



INTERNSHIPS

Many students take part in paid internship opportunities as an option for short-term work to gain relevant work experience.

SFU Beedie's Career Management Centre supports students in their job search for internships.

Internships are open to all SFU Beedie students regardless of GPA or academic standing:

beedie.sfu.ca/bbacareers

GOVERNMENT STUDENT LOANS AND GRANTS

Government student loans and grants are an additional resource that Canadian or U.S. students can use to help fund their education.

SFU Financial Aid Advisors are here to help navigate funding options: sfu.ca/students/financialaid/undergrad/loans

\$3.1M

IN SCHOLARSHIPS, AWARDS, AND BURSARIES

received by SFU Beedie students this past year

A large-scale graduation ceremony is taking place in a modern, high-ceilinged arena. The graduates are seated in rows, wearing blue caps and gowns with red and white sashes. The arena's architecture features a complex steel truss structure and large windows. In the background, there are blue and red bunting decorations and a stage area. The overall atmosphere is formal and celebratory.

**GET READY
TO CHANGE
THE FUTURE**

At the Beedie School of Business, you'll gain more than a degree. You'll graduate with skills built through partnerships with industry and business leaders, a professional network, a global perspective, and the knowledge needed to make a meaningful impact in the world.

CONVOCATION



CONTACT US

Burnaby
8888 University Drive
Burnaby, BC V5A 1S6
Tel: 778-782-5567

Surrey
250 - 1345 102 Avenue
Surrey, BC V3T 0A3
Tel: 778-782-8019

Email: bsb_recruitment@sfu.ca
beedie.sfu.ca/bba

Webinars



Follow us on social media to learn more about our program and SFU Beedie student life.

facebook.com/SFUBeedie
instagram.com/sfubeedie
twitter.com/sfubeedie



TSAWWASSEN

Simon Fraser University respectfully acknowledges the x^wməθk^wəyəm (Musqueam), Skwxwú7mesh Úxwumixw (Squamish), səliwətaʔi (Tsleil-Waututh), qícəy (Katzie), k^wik^wəlam (Kwkwetlem), Qayqayt, Kwantlen, Semiahmoo and Tsawwassen peoples on whose unceded traditional territories our three campuses reside.