

# BACHELOR OF BUSINESS ADMINISTRATION

FALL 2022

TRANSALTA RENEWABLES INC (RNW)  
0 @ 14.10 ▲ 0.00

RUSSEL METALS INC (RUS)  
0 @ 20.97 ▲ 0.00

ROYAL BANK OF  
0 @ 104.33

Simon Fraser University

Simon Fraser  
University

MARKET IS OPEN



**CREATE FRIENDSHIPS THAT WILL ONE DAY  
BECOME AN INVALUABLE BUSINESS NETWORK.**

Discovery awaits you at every turn during your SFU Beedie journey. Unlock new skills and perceptions as you chase big ideas and upend the status quo.

You'll apply big picture thinking to real-world business problems and build a customizable learning experience that is relevant and personalized to you.

No matter what path you take, you'll graduate with knowledge and experiences that signal you're agile, inventive and ready to lead.

**JDC WEST 2019 & 2021 CASE COMPETITION:  
SCHOOL OF THE YEAR, ACADEMIC SCHOOL OF THE YEAR**

**WINNING TOGETHER IS  
GOOD BUSINESS**



LEARN ABOUT WHAT GOOD BUSINESS MEANS  
BY FOLLOWING US ON INSTAGRAM  
[INSTAGRAM.COM/SFUBEEDIE](https://www.instagram.com/sfubeedie)



# CHANGE STARTS HERE



CHECK OUT THE BURNABY CAMPUS



## LEADER. CHANGEMAKER. BIG PICTURE THINKER. WHO DO YOU WANT TO BE?

SFU Beedie is home to those who believe that business has the power to spark new ideas, fuel social innovations and advance society. Through teaching and learning powered by world-class research, meaningful community engagement, and global outlook, SFU Beedie takes business education beyond the walls of academia. We empower people from diverse backgrounds and perspectives to reimagine the role that business plays in tackling society's most significant challenges.

# 1%



**OF BUSINESS SCHOOLS** worldwide  
have AACSB and EQUIS accreditation

# 3,820

**UNDERGRADUATE STUDENTS** (2020/21)

# #1

**BUSINESS SCHOOL**  
at JDC West 2019 & 2021

# #1

**COMPREHENSIVE  
UNIVERSITY IN CANADA**

according to  
Maclean's Magazine  
12 out of the last 13 years

# 2

**CAMPUSES**

offering courses  
in all 3 terms



CUSTOMIZED FOR YOU

#1

CHOOSE YOUR PACE

Take a term off or push hard to graduate sooner with our 3-term system.

#2

CHOOSE YOUR CAMPUS

Take courses in Surrey, Burnaby, or both.

#3

CHOOSE YOUR PASSION

Select from 9 different areas of concentration.

95%

OF 1ST YEAR SFU BEEDIE STUDENTS SUCCESSFULLY TRANSITION INTO 2ND YEAR

CHOOSE YOUR PACE

No matter what path you choose, gain an edge with hands-on learning that combines applied problem-solving with a foundation in contemporary business principles and practices.

Tailor your studies in a flexible, customized program responsive to your needs. Take a term off to try out Co-op, or go on international exchange. It's all up to you.

Our trimester system, day and evening classes, and two campuses mean you can study what, where, and when you want.

CHOOSE YOUR PROGRAM

Our BBA allows you to focus on any custom combination of our nine diverse and in-demand areas of concentration.

Finance	Management Information Systems	Accounting
Innovation & Entrepreneurship	Human Resource Management	Operations Management
International Business	Marketing	Strategic Analysis

From there, create an educational experience uniquely your own with courses and activities tailored to your goals. Add a certificate or minor, pursue an honours or joint degree, explore courses in other disciplines — you're limited only by your imagination.



DEFINE YOUR OWN JOURNEY



**Dr. Sarah Lubik**  
SFU's Director of Entrepreneurship  
Lecturer in Entrepreneurship & Innovation  
Business in Vancouver Forty Under 40  
Canadian Innovation Leader





# LIFELONG FRIENDSHIPS FUTURE NETWORKS

# 789

**CO-OP WORK TERMS**  
in academic calendar year  
2020/2021

# \$12,600

**AVERAGE SALARY**  
for a 4 month Co-op term

# 250+

**CLUBS AT SFU**  
11 SFU Beedie specific student run  
organizations

# 110

**COUNTRIES REPRESENTED**  
in the SFU undergraduate student body

# 19,000+

**BBA ALUMNI**  
in over 50 countries

# 66

**EXCHANGE PARTNERS**  
in over 37 countries

**DISCOVER TALENTS AND  
INTERESTS YOU NEVER  
KNEW YOU HAD**



## CASE COMPETITIONS

Tackle real business problems in competitions  
against the sharpest student minds in the world.

## STUDENT ORGANIZATIONS

Find a club that inspires you, or start your own.  
Meet lifelong friends and lay the foundation for  
your professional network.

## STUDY ABROAD

Go on exchange and immerse yourself in  
another culture with one of SFU's 120+  
international partners.







# READY FOR THE REAL WORLD

As a graduate, you'll enter the market with a robust skillset that signals you are ready to drive change for a better world.

Our dedicated Career Management Centre will assist with career development including workshops, career prep programs, coaching, mentoring, networking, exclusive recruitment events, job postings and more.

## EARN WHILE YOU LEARN

Build your resume with paid industry experience while you complete your degree. SFU Beedie offers one of the largest Co-operative Education programs in Western

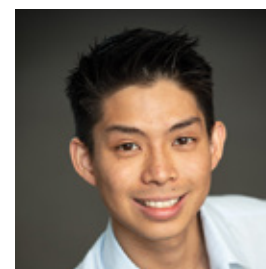


Canada. You'll have access to 3,000 local and international job postings to explore different career options in a variety of industries.



**Emily Davies, BBA, FINANCE**  
**Linde Equity, PARTNER**

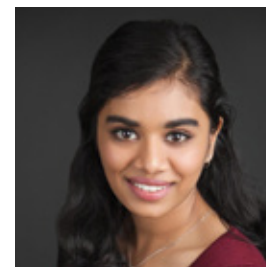
*"My interest in finance came from SFU's BEAM program. It is not a trading simulation. It's real money at stake and the training is extremely rigorous. It's that whole package that SFU Beedie offers that prepares students for what investment management as a career has to offer."*



**John Nguyen, BBA**  
**BUSINESS OF**  
**DESIGN, TECH @SFU**  
**NOVION**  
**FOUNDER/**  
**OPERATIONS**

*"SFU Beedie is incredibly flexible. You can blend your learning and make valuable connections between business and other fields, like design or environmental studies. You can really shape your own degree."*

[Read more about John's experience at SFU Beedie](#)



**Sharlene Kumar, BBA**  
**ACCOUNTING**  
**BDO**  
**STAFF ACCOUNTANT IN**  
**AUDIT AND ASSURANCE**

*"I appreciated how integrated the BBA program was right from the start. Transferring from a smaller university, I had a preconceived notion that going to SFU meant I would be a small fish in a big pond. But SFU Beedie immediately felt like a community."*

[Read more about Sharlene's experience at SFU Beedie](#)

# 1000+

## MENTORS IN BUSINESS

pairings between SFU Beedie students and industry mentors from 2017 - 2021

# 400+

## EMPLOYER CONNECTIONS

# 220+

## EARLY-STAGE STARTUPS

have received business development and financial support through SFU Coast Capital Savings Venture Connection

# \$2.6M

## IN SCHOLARSHIPS, AWARDS, AND BURSARIES

received by SFU Beedie students this past year

# \$8.02M

## MANAGED BY SFU BEEDIE ENDOWMENT ASSET MANAGEMENT FUND

making it one of the largest undergraduate student-run investment funds in all of Canada (as of March 2021)

# \$62,498

## AVERAGE BBA GRAD SALARY 2 YEARS AFTER GRADUATION





# BEEDIE LIVING LEARNING COMMUNITY

Get the most of your on-campus living experience and become part of a tight-knit community of peers with similar academic goals and priorities.



As an LLC member in residence, you'll share a floor with other SFU Beedie students and benefit from peer support, networking opportunities, social events, and student success programs – all right outside your door. Live together, study together, have fun together, and enjoy a sense of belonging that helps smooth the transition to university life.

The LLC tailors programs to meet the social and learning needs of students, and as you grow and connect through shared experiences, you'll build lifelong friendships that will guide you through your university experience and into your career.



## AS AN LLC MEMBER, YOU WILL

- Enjoy convenient access to student success services and resources,
- Build community with students, staff, and faculty in the Beedie School of Business and in residence,
- Benefit from higher levels of academic self-confidence,
- Be more likely to successfully engage in co-curricular experiences,
- Be inspired to become a student leader or mentor,
- Explore your passions with like-minded people living in your community,
- Develop your leadership skills and get involved outside of the classroom.

Learn more about residence, programs and eligibility here - [sfu.ca/students/residences](https://sfu.ca/students/residences)







# ADMISSION REQUIREMENTS 2022

## BC HIGH SCHOOL

# #1

Students must meet SFU's **English Language** and **Quantitative and Analytical Skills requirements**, plus complete all required Grade 11 & 12 course requirements.

# #2

The Admission Evaluation is based on **all approved** Grade 11 and 12 courses, with greater emphasis on those in List A.

# #3

Students must also complete a Supplemental Application, or complete an eligible Entrance Scholarship Application.

## GRADE 11 REQUIREMENTS (ALL LIST B)

Students must complete a minimum of 5 approved Grade 11 courses, including:

**- English 11 or equivalent**

**- Language 11 or equivalent**

**- Math 11, at least one of:**

Foundations of Math 11  
Pre-Calculus 11

**- Science 11, at least one of:**

Chemistry 11  
Earth Sciences 11  
Environmental Science 11  
Life Sciences 11 (Biology 11)  
Physics 11  
Specialized Science 12

**- Social Studies 11, at least one of:**

Explorations in Social Studies 11  
Francophone History 11  
Approved Social Studies 12 course  
**- + any additional non-required, approved courses**  
Any Arts Education 11 courses  
Engineering 11

## GRADE 12 REQUIREMENTS

Students must complete a minimum of 5 approved Grade 12 courses, including:

### LIST A

**- English Studies 12 (min 70%) or equivalent**

**- Pre-Calculus 12**

**- ONE of:**

20th Century World History 12 (History 12)  
Anatomy & Physiology 12 (Biology 12)  
Calculus 12  
Chemistry 12  
Composition 12  
Creative Writing 12  
Economic Theory 12  
Economics 12  
Genocide Studies 12  
Law Studies 12 (Law 12)  
Literary Studies 12 (English Literature 12)  
New Media 12  
Philosophy 12  
Physics 12  
Spoken Language 12  
Statistics 12

**+2 additional approved Grade 12 courses from List A or List B**

Note: Equivalent AP or IB courses may be used in place of the above courses.

### LIST B

Accounting 12	Geology 12
American Sign Language 12	Geometry 12
Asian Studies 12	German 12
BC First Peoples 12	Human Geography 12
Comparative World Religions 12	Italian 12
Comparative Cultures 12 (Comparative Civilizations 12)	Japanese 12
Computer Science 12	Korean 12
Contemporary Indigenous Studies 12	Mandarin 12
Engineering 12	Mechatronics 12
Entrepreneurship 12	Physical Geography 12 (Geography 12)
Environmental Science 12 (Sustainable Resources 12)	Political Studies 12
Financial Accounting 12	Punjabi 12
Foundations of Math 12	Russian 12
French 12	Social Justice 12
	Spanish 12
	Urban Studies 12

### HIGH SCHOOL DEADLINES (FALL 2022)\*

December 15, 2021	Entrance Scholarship Application Closes
January 31, 2022	Entrance Scholarship Documents
January 31, 2022	SFU Application Closes
February 7, 2022	SFU Beedie Supplemental Application, Self-Reported Grades and Documents

High school graduates, or students with fewer than 24 units of transferable coursework from another post-secondary institution, are competitively selected for admission in the fall and spring terms (only).

All information is correct at the time of publication, please check our **admissions website** for the most up to date information.

\* Visit [beedie.sfu.ca/bba/apply](https://beedie.sfu.ca/bba/apply) for complete details on course requirements, deadlines, the Supplemental Application and the application process.



# ADMISSION REQUIREMENTS 2022

## POST-SECONDARY TRANSFER

# #1

### **TRANSFER FROM ANOTHER SFU FACULTY**

Take advantage of the same courses, instructors, and resources as SFU Beedie students while you work towards internal transfer.

OR

### **TRANSFER FROM ANOTHER COLLEGE OR UNIVERSITY**

Get a head start on your business degree by completing transferable courses, then apply once you meet the basis for selection, including:

- Minimum of 24 transferable units
- SFU's **English Language** and **Quantitative and Analytical Skills** requirements

# #2

### **GPA REQUIREMENTS**

Applicants must be in Good Academic Standing and will be considered under the following pathways:

1. 3.30 GPA average on the 8 required courses (up to 3 may be in progress).

OR

2. 2.80 - 3.29 GPA average on the 8 required courses (up to 3 may be in progress) plus your Supplemental Application.

# #3

### **COURSE REQUIREMENTS**

Admission courses (minimum C- required\*; no more than 2 may be repeated, 1 time each).

- BUS 232 (or BUEC 232 or ECON 233 or STAT 270)
- BUS 237
- BUS 251
- BUS 272
- ECON 103
- ECON 105
- MATH 157 (or MATH 150/151/154)

#### **Plus ONE of:**

- Any 3-unit transferable ENGL or SFU ENGL course
- or PHIL 100W, 105, 110, 120W, 150
- or WL 101W, 103W, 104W, 105W

Visit [beedie.sfu.ca/bba/apply](https://beedie.sfu.ca/bba/apply) for complete details on course requirements, deadlines, the Supplemental Application and the application process.

Standard letter grades are required for all 8 required courses, with the exception of courses completed in Spring 2020.

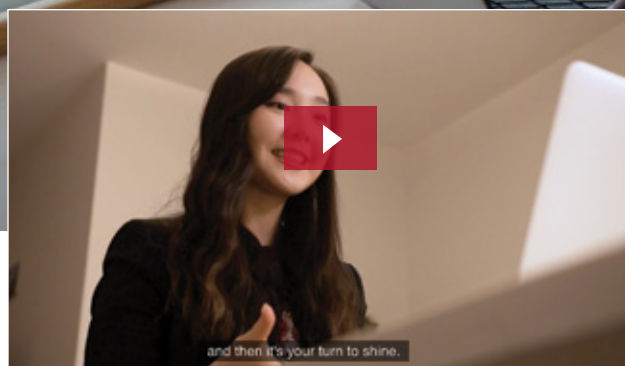
All information is correct at the time of publication, please check our [admissions website](#) for the most up to date information.





SUPPLEMENTAL APPLICATION  
OR AS WE LIKE TO CALL IT

# YOUR STORY



## IT'S TIME. YOUR SFU BEEDIE STORY BEGINS HERE.

You worked hard for your grades, but we know you are more than just numbers on a page. The Supplemental Application brings to life your experiences and personality. It is your chance to share with us a complete picture of who you are and why an SFU Beedie education is right for you.

Marks matter, but so do your experiences, achievements and communication style.

Members of SFU Beedie's Supplemental Evaluation Committee carefully assess each application and create a score. This score is combined with your admission evaluation to determine eligibility to SFU Beedie. Before scoring, we remove information which might identify you to ensure you are rated solely on the strength of your answers.

## WHAT TO EXPECT

- A short answer response that reveals more about who you are and demonstrates your communication skills.
- A place to describe your extra-curricular activities: from athletics and artistic pursuits, to volunteer work and community involvement, tell us about your interests and what makes you unique.
- Two online interview responses (applicable for transfer students only).
- A place for you to share something which does not fit into the above categories.
- A request for two references.
- Payment of the Supplemental Application fee.

# TIPS

**THINK** about your application now. Reach out to references early; don't wait until the last minute. Plan ahead for logistics like application deadlines and methods of payment.

**READ** through the whole application before you begin. Take your time, and follow all instructions carefully. Be sure to review your completed application for errors before you submit.

**REFLECT** on your experiences—both challenges and achievements—and how they have prepared you for SFU Beedie.

**BE AUTHENTIC** because we want to learn about the real you. You can talk to others about your application, but we want you to tell your story in your own words.

**BE ACCURATE** because we evaluate all content and take falsification of information and plagiarism seriously. Make sure your references can validate your experiences.

## HOW TRANSFER STUDENTS CAN ACE THEIR VIDEO INTERVIEW QUESTIONS

**PRACTICE** is the key to developing polished responses. Practice using our sample questions, review your recorded answers, then proceed to the official questions once you're ready.

**ASK A FRIEND** or family member to critique your on-camera practice performance. Were your answers clear? Did you speak too quickly or too slowly? Be open to feedback.

**REVIEW YOUR SURROUNDINGS** and find a quiet space to practice, free from distractions and interruptions. Look for a neutral background in a room with good lighting. Consider using the same space to record your final submission.

**STAY FOCUSED** and be concise with your answers. Relate them back to the SFU Beedie program where appropriate.

**DEMONSTRATE CONFIDENCE** by looking into the camera as you answer questions to create the appearance of eye contact with the person reviewing your video. Maintaining eye contact shows self-assurance and focus.

**SEEK OUT RESOURCES** at your current institution—such as career services—to gain feedback and develop your interview skills.





# FUNDING YOUR DEGREE

There are many ways to fund your degree. In addition to being employed through part-time jobs and Co-ops, last year SFU Beedie students received \$2.6M in financial aid. Below are some funding opportunities for you to consider.

## #1 SCHOLARSHIPS, AWARDS, AND BURSARIES

### A) ENTRANCE SCHOLARSHIPS

*(present grades in the 90s or 31 IB points)†*

SFU Undergraduate Scholars Entrance Scholarships (Values range from \$10,000 up to an amount sufficient to cover tuition and mandatory supplementary fees. Further funding, in the form of a living allowance, may be offered to support exceptionally talented students with demonstrated financial need.)

Lloyd-Carr Harris Foundation Entrance Scholarship in Business Administration (\$20,000)

### B) SCHOLARSHIPS, AWARDS, AND BURSARIES FROM YEAR 2 ONWARDS

SFU offers scholarships, awards and bursaries for continuing SFU students.

Domestic and international students can apply for these opportunities each term.

## #2 WORK-STUDY

A Work-Study position is an opportunity to participate in research-based projects and earn a supplemental income. Students gain valuable experience connecting with various members of the SFU community while building their co-curricular record. You must complete a minimum of 100 hours in your Work-Study position.

For more information: [sfu.ca/students/financialaid/undergrad/work-study](https://sfu.ca/students/financialaid/undergrad/work-study)

## #3 PART-TIME WORK

With our flexible BBA program, a large number of SFU Beedie students work part-time while studying full-time. 50% of surveyed students indicated that they are working while going to school (66% of these students are working 10-29 hours per week). SFU Beedie's Career Management Centre supports students in their job search for part-time opportunities.

For more information: [beedie.sfu.ca/bbacareers](https://beedie.sfu.ca/bbacareers)

## #4 CO-OP (DOMESTIC OR INTERNATIONAL)

SFU Beedie has one of the largest Co-op programs in Western Canada, allowing students to apply academic theory to paid, full-time work experience in their desired industries.

Last year, SFU Beedie secured **789** Co-op work term placements, with **37** based outside of Canada.

Examples of SFU Beedie Co-op employers: Deloitte, EY, PWC, KPMG, SAP, Microsoft, Google, Tesla, Facebook

Average salary for a 4 month term: \$12,600

Co-op fees apply. For more information:

[sfu.ca/coop/programs/beedie](https://sfu.ca/coop/programs/beedie)

## #5 INTERNSHIPS

Many students take part in paid internship opportunities as an option for short-term work to gain relevant work experience. Internships are open to all SFU Beedie students regardless of GPA or academic standing.

The SFU Beedie's Career Management Centre supports students in their job search for internships.

Internships are open to all SFU Beedie students regardless of GPA or academic standing:

[beedie.sfu.ca/bbacareers](https://beedie.sfu.ca/bbacareers)

## #6 GOVERNMENT STUDENT LOANS AND GRANTS

Government student loans and grants are an additional resource that Canadian or U.S. students can use to help fund their education.

SFU Financial Aid Advisors are here to help navigate funding options:

[sfu.ca/students/financialaid/undergrad/loans](https://sfu.ca/students/financialaid/undergrad/loans)



For further information on scholarships, awards, and bursaries visit: [sfu.ca/students/financialaid/entrance](https://sfu.ca/students/financialaid/entrance)

*† Predicted bonus points are not considered in the calculation*



**GET READY  
TO CHANGE  
THE FUTURE**



## CONTACT US

### Burnaby

8888 University Drive  
Burnaby, BC V5A 1S6  
Tel: 778-782-5567

### Surrey

250 - 1345 102 Avenue  
Surrey, BC V3T 0A3  
Tel: 778-782-8019

Email: [bsb\\_admit@sfu.ca](mailto:bsb_admit@sfu.ca)

[beedie.sfu.ca/bba](http://beedie.sfu.ca/bba)

[facebook.com/SFUBeedie](https://facebook.com/SFUBeedie)

[twitter.com/sfubeedie](https://twitter.com/sfubeedie)

Follow us on Instagram to learn more  
about what our students are doing.

[instagram.com/sfubeedie](https://instagram.com/sfubeedie)



### TSAWWASSEN

Simon Fraser University respectfully acknowledges the x̱m̱əθḵʷəy̱əm (Musqueam), Skwxwú7mesh Úxwumixw (Squamish), salilwətaʔl (Tsleil-Waututh), q̱íçəy̱ (Katzie), ḵwíḵʷəłəm (Kwkwetlem), Qayqayt, Kwantlen, Semiahmoo and Tsawwassen peoples on whose unceded traditional territories our three campuses reside.